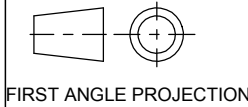


# A2 INSTALLATION DRAWING

If this document is printed in hardcopy, it is for information use only and therefore is not subject to updating controls. Always refer to viewer for latest issue.



THIS DRAWING IS CONFIDENTIAL AND IS SUPPLIED ON THE EXPRESS CONDITION THAT IT SHALL NOT BE LOANED OR COPIED OR DISCLOSED TO ANY OTHER PERSON OR USED FOR ANY OTHER PURPOSE WITHOUT THE WRITTEN CONSENT OF AP RACING LTD.

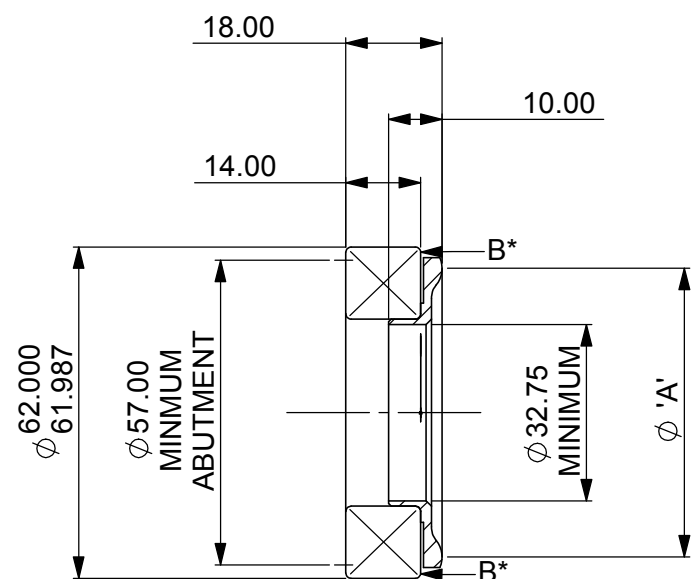


© AP Racing Ltd. 2004

AP Racing  
Wheler Road  
Coventry  
CV3 4LB

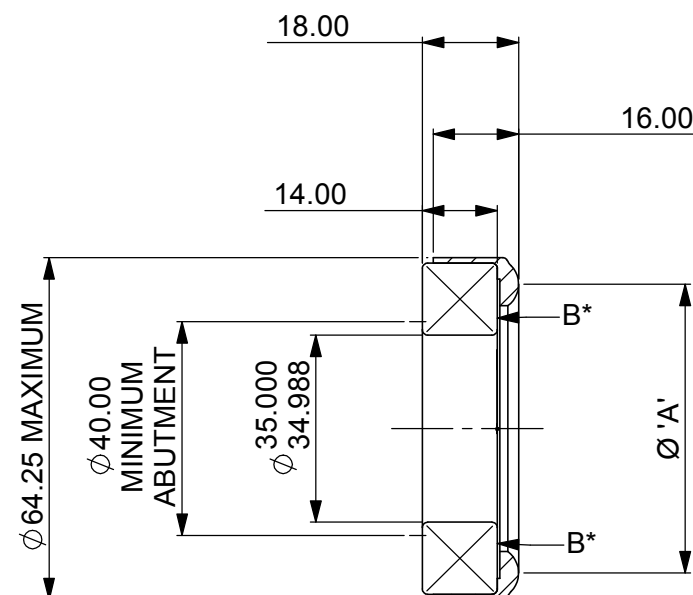
Tel: +44 024 7663 9595 e-mail: sales@ap racing.co.uk  
Fax: +44 024 7663 9559 Web site: HTTP://www.ap racing.com

Issue No.	Date & No.	Alterations		Zone	Initials
		Particulars			
5	24/02/05 C2626	REDRAWN IN SOLIDWORKS	CP3457-19 ADDED.	#	JG



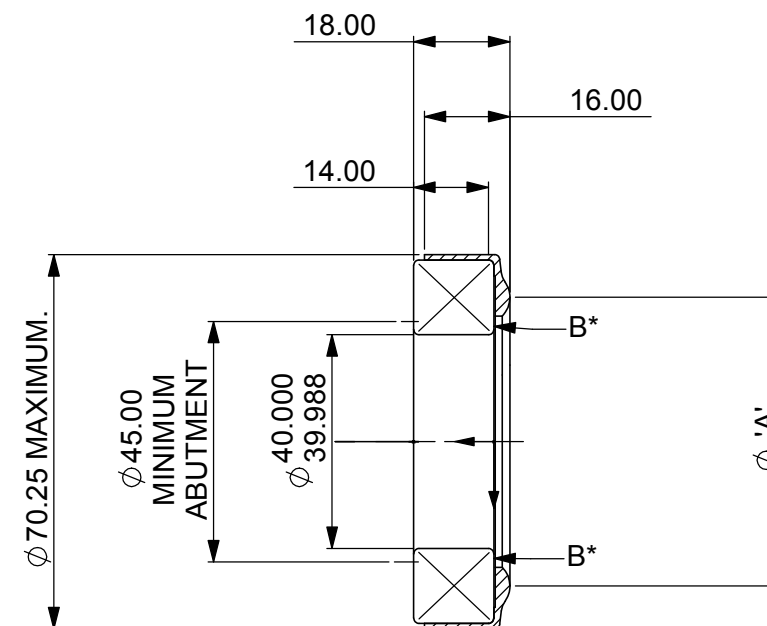
C-C

HIGHT SPEED RELEASE BEARING  
INNER RACE ROTATES



B-B

STANDARD RELEASE BEARING  
(Ø35.00mm LOCATION DIAMETER)  
OUTER RACE ROTATES



A-A

STANDARD RELEASE BEARING  
(Ø40.00mm LOCATION DIAMETER)  
OUTER RACE ROTATES

Ø 'A' RELEASE FULCRUM	PART NUMBER
Ø50.00mm	CP3457-11
Ø54.00mm	CP3457-6
Ø38.00mm	CP3457-16

Ø 'A' RELEASE FULCRUM	PART NUMBER
Ø50.00mm	CP3457-1
Ø54.00mm	CP3457-2

Ø 'A' RELEASE FULCRUM	PART NUMBER
Ø50.00mm	CP3457-9
Ø54.00mm	CP3457-10
Ø45.00mm	CP3457-19

**INSTALLATION OF RELEASE BEARING.**

TO PREVENT INTERNAL DAMAGE TO BALL RACES WHEN INSTALLING ON THE RELEASE MECHANISM, USE THE MINIMUM FORCE NECCESARY ON SURFCES MARKED 'B' ONLY.

**NOTE:**

THE FOLLOWING BEARING ASSEMBLIES ARE FILLED WITH KLUBER ASONIC HQ72-102 GREASE CP3457-1, -2, -6, -11, -16.

SCALE 1:1	SHEET 1 OF 1
DRAWN	Jeremy Govan
APPROVED	
DERIVED FROM	cp3457-7 (medusa)
TITLE	RELEASE BEARING ASSMBLIES
DRG NO.	cp3457-7